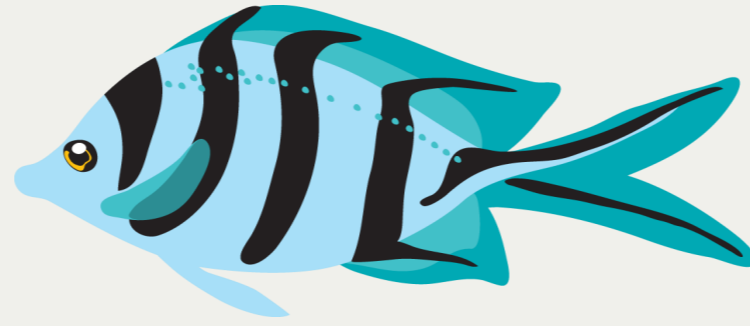
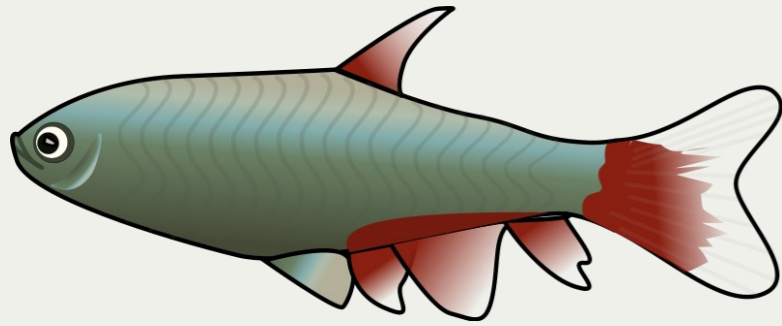


Making a Difference at Katfish Reach and Katarapko



Were you aware that.....

A high number of shrimp were recorded during the fish survey.

Noticeable decrease in the abundance of the introduced common carp

98.3% of the total catch's were native fish, 1.7% were individuals from alien species

An increase in the abundances of Australian smelt abundance compared to previous surveys

Turtles were also found at Katfish Reach



Did you know!?

Carp Gudgeon the most popular fish species at Katarapko was found at each monitoring location

The small native fish, Carp Gudgeon was the most abundant species within the Katfish Demonstration Reach for native fish.

During Bank J fishway surveys, over 2000 fish from seven species were sampled

Findings how that fast flows through the creek systems may have provided habitat and conditions for the species found

