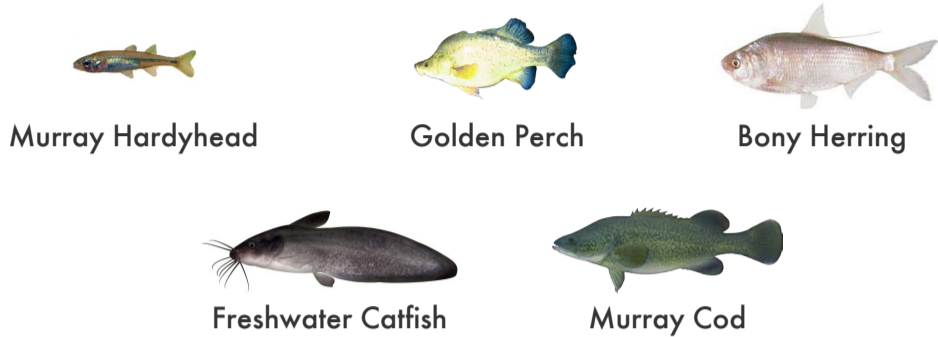


BRINGING BACK NATIVE FISH

The Katfish Reach Project

WHY?

Native fish in the Katarapko/Eckert Creek anabranch system are important and under threat.

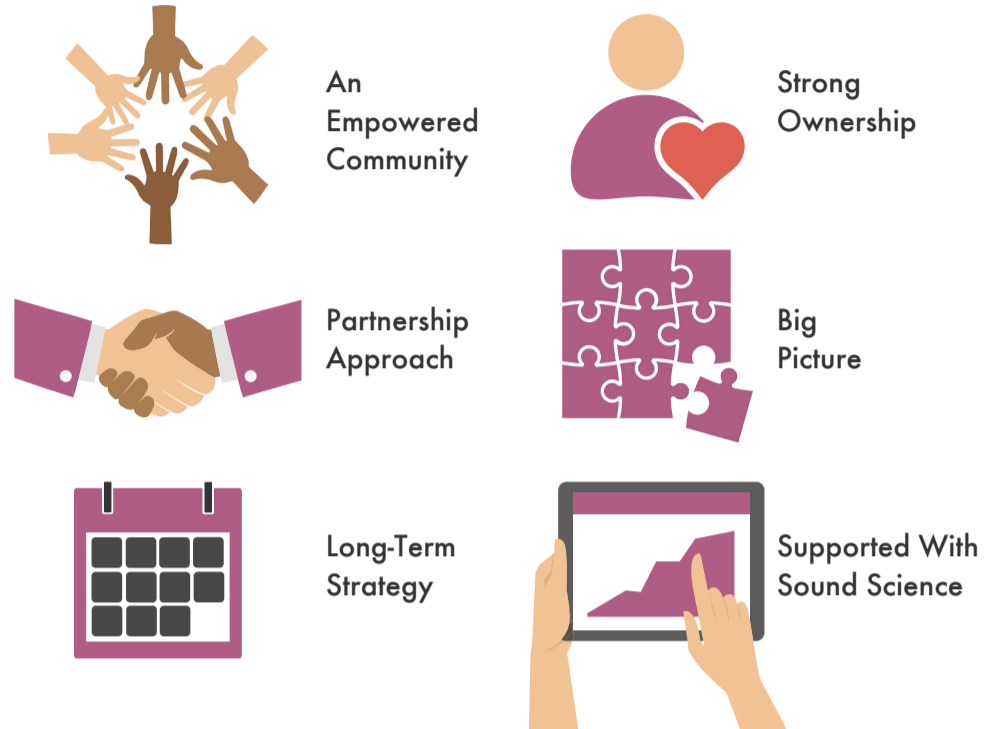


CAUSES



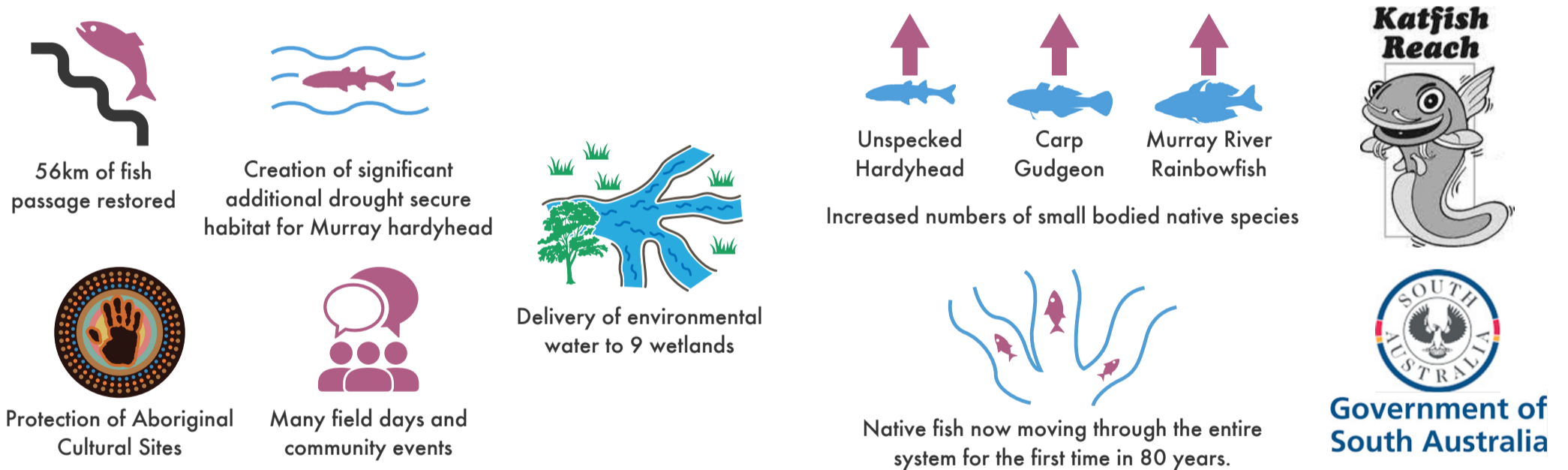
WHAT CAN BE DONE?

Use the demonstration reach approach, which has...



WE KNOW IT WORKS

Success of the Katfish Demonstration Reach has come from a partnership between the Katfish Reach Steering Committee, the Murray-Darling Basin Authority, the Department of Environment Water and Natural Resources, and passionate interested local community members.



FIND OUT HOW

Open the Finbox and apply the four Demonstration Reach pillars - visit www.finterest.com.au... For further information on Katfish Demonstration Reach contact lara.suitor@sa.gov.au

