



Progress Update Demonstration Reaches in NSW

August 2007

Sharon Molloy

**NSW DPI (Conservation Action Unit)
NSW NFS Coordinator**

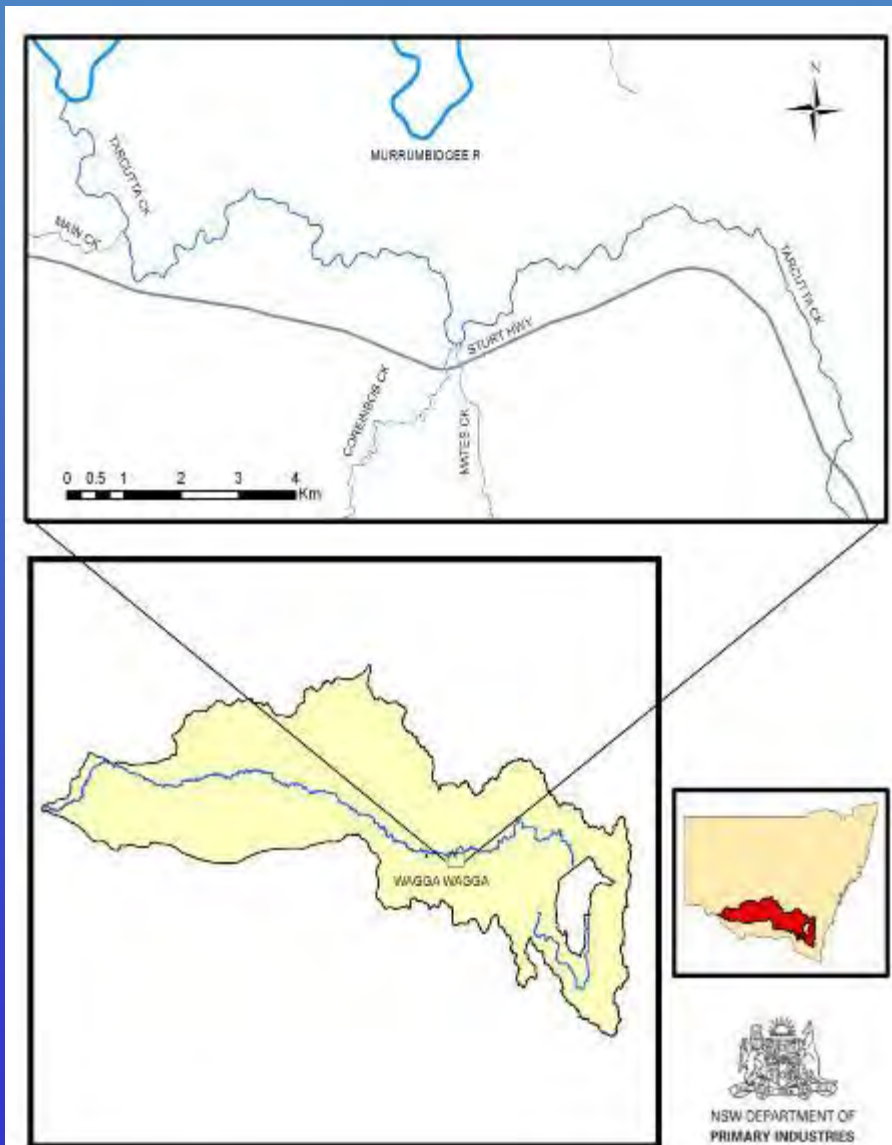


4 DEMONSTRATION REACHES IN NSW

- Tarcutta Creek - UPPER MURRUMBIDGEE
- Bourke to Brewarrina - BARWON-DARLING
- Upper Castlereagh - MACQUARIE
- Narrabri to Boggabri - NAMOI



Tarcutta Creek - Upper Murrumbidgee - 26kms





TARCUTTA CREEK

Funding

- Environmental Trust \$130 000; MDBC \$70 000

Project outcomes/outputs

- Workshop held in conjunction with the FFF program.
- Project agreement with BSRC.
- Numerous signs installed at prominent locations.
- A brochure has been developed and distributed.
- ABC radio interviews conducted.
- On-ground works conducted include.....



Snag realignment/placement (10 sites)



4 rock groynes and 5 rock pyramids





Fencing (4km)

Native replanting (10 000 trees;1000
phragmites; 4.5km)



Willow Removal /Management (15km)



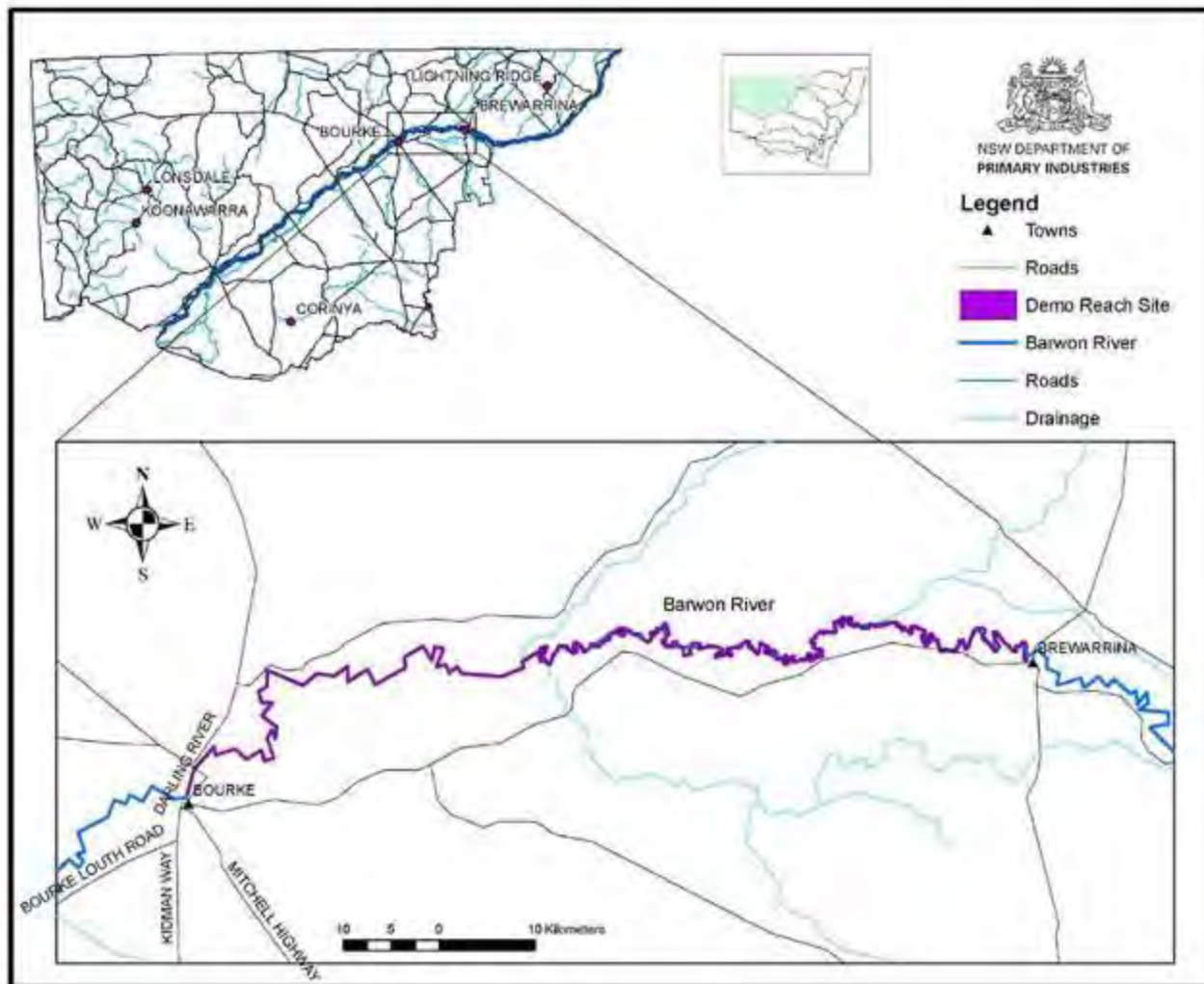


Signs placed on the walking track

Brochure



Bourke to Brewarrina – Barwon-Darling - 200km





BOURKE TO BREWARRINA

Funding

- Western CMA \$2.6M, MDBC \$50 000

Project outcomes/outputs

- Instream and riparian habitat assessment.
 - *4085 snags have been mapped along 175km of the reach.*
 - *Assessed the condition of trees, shrubs, grasses, reeds, water plants and groundcover.*
 - *Rapid Appraisal of Riparian condition completed April 2007.*
- Resnagging works:
 - *DA applications for resnagging works at 11 sites ready for submission to Councils .*
 - *Logs for all resnagging has been secured (Lachlan, Carrathool and Warren Councils) and the Moree By-pass project.*
 - *Transport of logs will commence as soon as DAs are issued.*
 - *Resnagging works planned to commence by November 2007 and completed mid 2008.*



Project outcomes/outputs cont'd

- First year of fish tagging and monitoring program completed in April 2007 - Second year of sampling to commence in October 2007.
- Fishway conceptual design for the Bourke Weir (3 options) under development and will be presented to Bourke Shire Council on 27th August 2007.
- New design for fishway at Brewarrina Weir underway (Dept. of Commerce).
- Three landholders about to undertake co-funded works to remediate 5 gullies and undertake riparian revegetation.



Brewarrina weir



Lack of snags



What ya looking at!



Rubbish in gullies





Lock and weir at Bourke



Bank failure – Barwon River



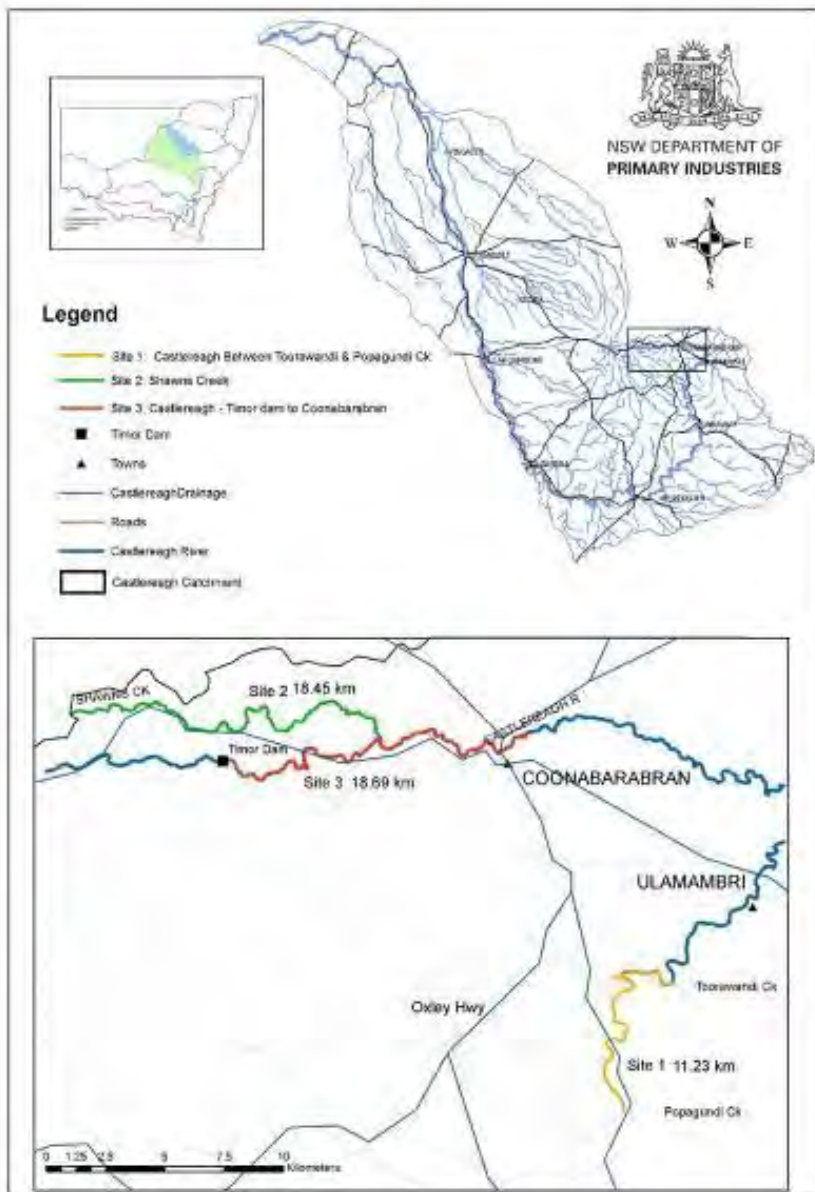
Weeds - Noogoora Burr &
Sesbania spp.



Eroding gullies – Barwon River



Upper Castlereagh – Macquarie 48 kms - 3 sites





UPPER CASTLEREAGH

Funding

- Central West CMA \$355,000

Project outputs/outcomes

- **20km of works to date which include:**
 - 120 tonnes of snags reintroduced.
 - 400 tonnes of willow debris and sediment slugs removed.
 - 3km of riparian fencing.
 - 1400 trees planted.
 - 14km of fish passage has been reinstated.
 - Two public information signs - 'Fish Friendly Farm - Aquatic habitat rehabilitation, making more fish naturally' and 'River blackfish country next 10km' .
 - Posters have been designed.
 - Monitoring to date includes 1 round of SRA and photo points.



UPPER CASTLEREAGH

Future works

- Redundant road crossing removal.
- Installation of engineered log deflector jams and pinned log revetments.
- Further riparian fencing and planting.
- Gully stabilisation.
- Retrofitting block banks for fish passage.
- Off stream water points.
- Stocking of an endangered fish population (purple spotted gudgeon).

Future Directions

- Funding (\$290 000) has been extended to include another 30km of the Castlereagh River downstream of Coonabarabran – (starting October 2007).
- Support and funding (\$100 000) is being finalised to undertake a chain of ponds/swampy meadows restoration (first in western NSW) along Toorawandi Creek.



Signage

UPPER CASTLEREAGH RIVER DEMONSTRATION REACH



Rehabilitation works have been undertaken along the Upper Castlereagh River as part of the Upper Castlereagh River Demonstration Reach Project funded by the NSW Central West Development Authority. These works are designed to make the river 'fish friendly' by providing passage for passing fish while also improving the productivity and value of your property.

Activities on a fish friendly river can include:

- clearing native tree and grass borders to increase shade and provide habitat structure
- providing soft shores and log points for duck and waterfowl
- providing riparian bankside seating to provide shade
- providing a stream structure to create shade and oxygen
- undertaking bank weed and tree control
- installing fish friendly road crossings that allow passage to upstream and downstream

DID YOU KNOW?

- Native fish populations in the Upper Castlereagh River have declined due to increased use of fertiliser and pesticides in agriculture.
- Native fish populations in the Upper Castlereagh River are declining due to increased use of fertiliser and pesticides in agriculture.
- Native fish populations in the Upper Castlereagh River are declining due to increased use of fertiliser and pesticides in agriculture.
- Native fish populations in the Upper Castlereagh River are declining due to increased use of fertiliser and pesticides in agriculture.





Before - Road Crossing - Shawns Creek

After - Road Crossing - Shawns Creek



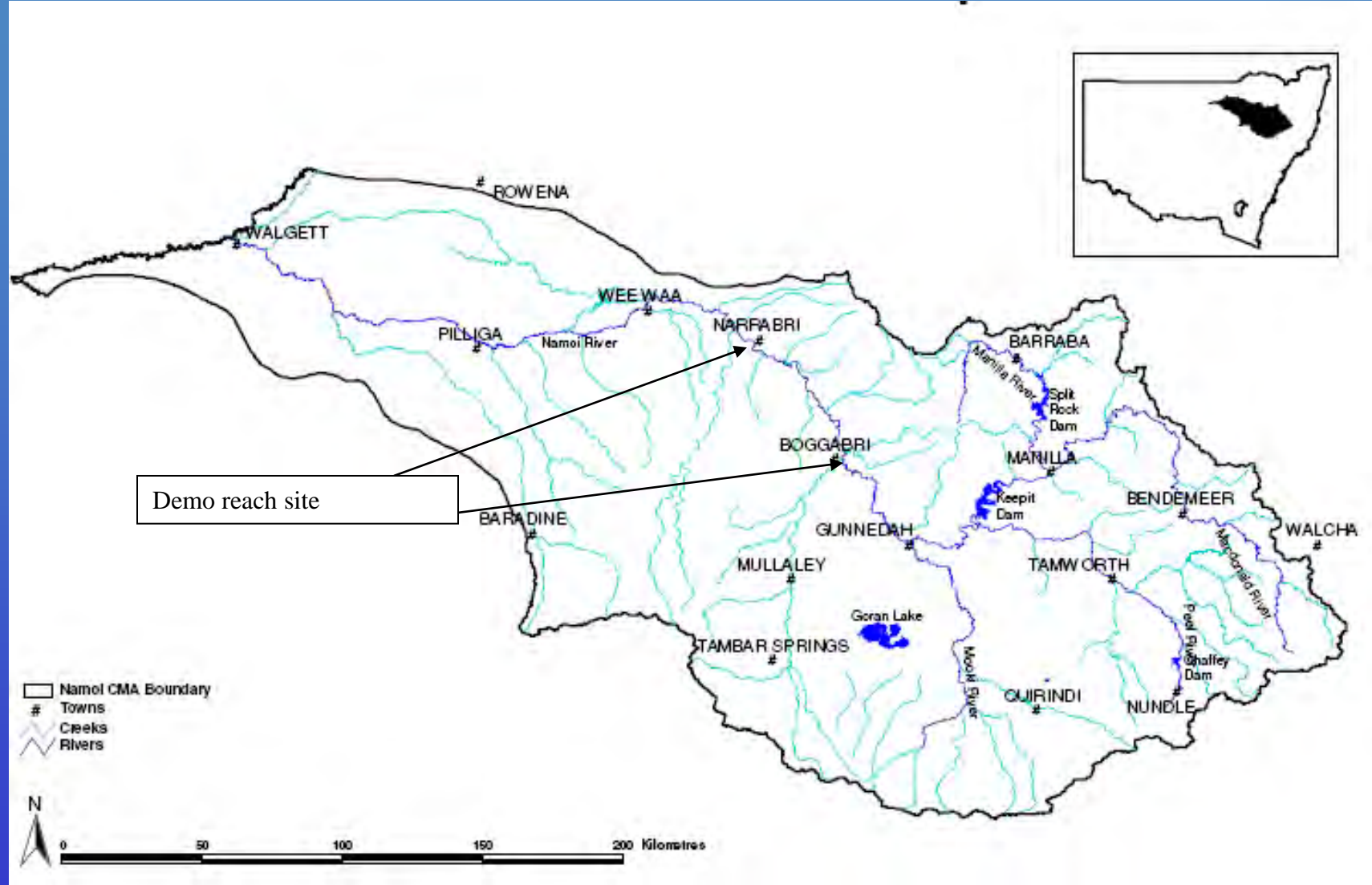
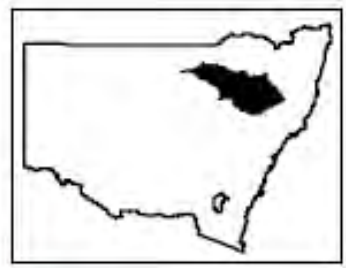
Before - Shawns creek eroded bank & deflecting snags

After - Shawns Creek log bank revetment



Before - Shawns Creek - headcut & deflecting log

After - Shawns Creek - rock shute and bank revetment



Narrabri to Boggabri – Namoi - 100kms



NAMOI Aquatic Habitat Initiative project

Funding

- \$1.1m from the Namoi CMA.
- Demo reach (\$600,000); Fish Passage (\$500,000).

Project outputs/outcomes for DEMO REACH

- Brochure produced.
- M and E strategy developed.
- Oral history underway.
- Two (2) workshops have been held to encourage community interest and ownership.
- Steering committee established to give direction to the project.
- EOI was sent out to all landholders within the demonstration reach.



Project outputs/outcomes for DEMO REACH cont'd

- Twenty (20) landholders have shown interest in the project.
- Two (2) projects have been developed and are awaiting implementation.
- Six (6) projects are currently being developed and undergoing negotiation with landholders.
- Support and additional funding has been secured from the Cotton CRC.
- The following stakeholders are supportive of the project:
 - Tamworth Rural Lands Protection Board,
 - Narrabri Council,
 - Narrabri Fishing Club,
 - Department of Environment and Conservation,
 - Boggabri Coal Mine,
 - Tamworth Green Corp.



Bank Erosion



Lack of snags



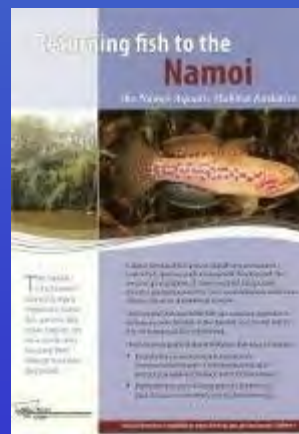
Willows



Lack of Riparian Veg



Stock access



Brochure